



E-City Sport

# FSD M200



MATTE BLACK



Find Your Retailer

COOKIE SETTINGS



### Reliable

A low-maintenance leisure bike scores top marks in speed.



### Reliable

A low-maintenance leisure bike scores top marks in speed.

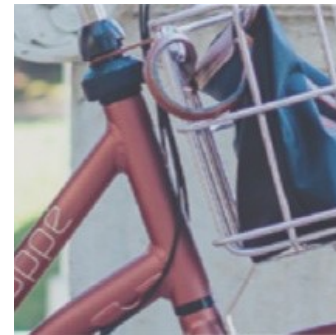
### Inner Cable Routing

A low-maintenance leisure bike scores top marks in speed.



### Inner Cable Routing

A low-maintenance leisure bike scores top marks in speed.





DISPLAY	compact display with control-ring
BATTERY	frame battery capacity: 313Wh, 418Wh or 504Wh
DRIVE UNIT	Sport Drive middle motor Dapu M250S, 36V, 80 Nm
E-BIKE SYSTEM	BFI Sport Drive with rotation and torque sensor
CHARGER	standard 2A or fast 4A

DISPLAY	compact display with control-ring
BATTERY	frame battery capacity: 313Wh, 418Wh or 504Wh
DRIVE UNIT	Sport Drive middle motor Dapu M250S, 36V, 80 Nm
E-BIKE SYSTEM	BFI Sport Drive with rotation and torque sensor
LOCK	AXA Solid
SADDLE	Selle Royal Athletic
RIM	J19DC, alloy double wall
FRONT HUB	HB-TX505
FORK	rigid, alloy
SIZES	53, 57, 61
CHARGER	standard 2A or fast 4A
FRONT LIGHT	AXA Blueline 30
REAR LIGHT	AXA Blueline
REAR HUB	SG-C3001-7D
BRAKES	hydraulic disc BR-MT200 SM-RT10, 160 mm
FRAME	gents
TIRES	CST Otis 37x622 with puncture protection